



## TIGER INDUSTRIAL LOCATIONS

### U.S.A.

|                       |               |
|-----------------------|---------------|
| Theodore, AL          | Beaumont, TX  |
| Broussard, LA         | Dilley, TX    |
| Cameron, LA           | Galveston, TX |
| Fourchon, LA          | La Porte, TX  |
| Intracoastal City, LA | Midland, TX   |
| Sulphur, LA           | Victoria, TX  |
| Venice, LA            |               |
| Kill Deer, ND         |               |
| Wooster, OH           |               |
| Springer, OK          |               |

### CANADA

Red Deer, Alberta

#### Safer

- Fire rated
- No broken boards
- No gaps in boards
- Safer lifting design
- Static inhibited
- No cable loops or chains



#### More Durable

- Synthetic material
- 3-ply laminated
- Bolted, not nailed
- 5,000 psi



#### Better for Environment

- No fluids absorbed
- Easily cleaned
- Less solids buildup



# ECOmats™

patent pending

## The much safer, much tougher synthetic mat.



24/7 Dispatch - 1.888.866.0047  
[TigerIndustrialRentals.com](http://TigerIndustrialRentals.com)  
*Make it happen.*



**ECOmats™ last for years.**

**Galvanized D-Rings**

Loads, offloads, lays, and moves easily with a fork truck or D-Ring for easy lifting.



**Meets ASME B30 Lifting Standards**

**No Nails - All Bolted**

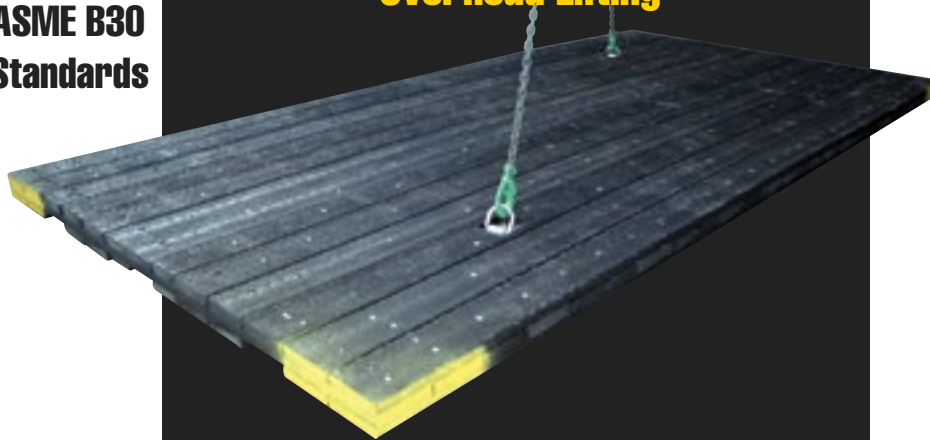
NO NAILS - bolted for extended strength and eliminates nails left after the job.



**Proof Tested & Load Rated**

ECOmats™ Lifters are load rated to 4,000 lbs in a pair.

**Approved for Overhead Lifting**



**Fire Proof for Greater Safety**

ECOmats™ have a Flame Spread Index - ASTM E84 CLASS 2 (B)

**Longer Lasting**

Synthetic Material designed with UV Inhibitors. Mats manufactured with up to 60% recycled material.

**No Liquid Absorption**

No Liquid Absorption: Passes the "WIPE " test. When properly washed, the mats can safely leave the chemical plants - does NOT absorb liquids.

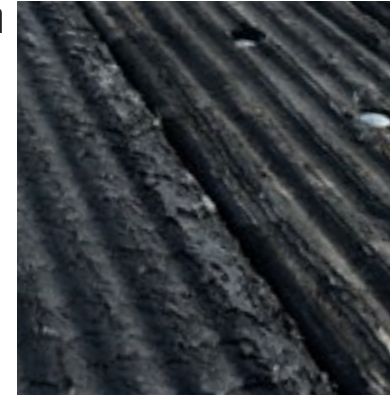
Does not have a hollow core and will not hold liquid like the hollow core composite mats.

patent pending

**ECOmats™ lower your costs.**

**Improved Traction**

Improved traction over traditional mats when dry or wet. Final manufacturing process "sears" a slip resistant pattern into the top of the plank.



**Increased Freight Savings**



Mats are lighter than wood - increased freight savings. Weight of mat: 2950 LBS + or - 2% Ships 16 mats per load.

**Compact Design**

Compact design - reduces mud and debris collection as opposed to wood mats that have gaps in the mat to air out, thus having space to collect mud increasing weight driving up freight out costs, as well as cleaning costs.

